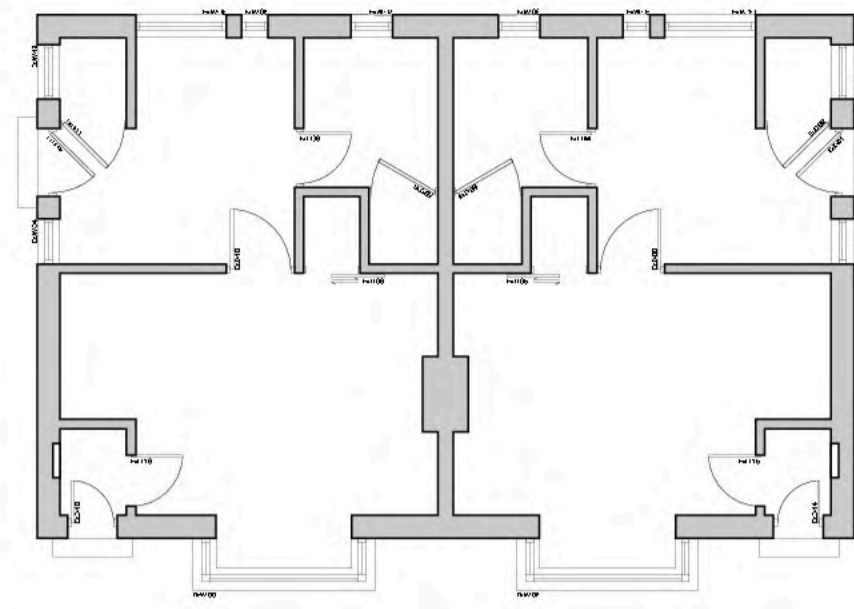




Site Location



Site Layout



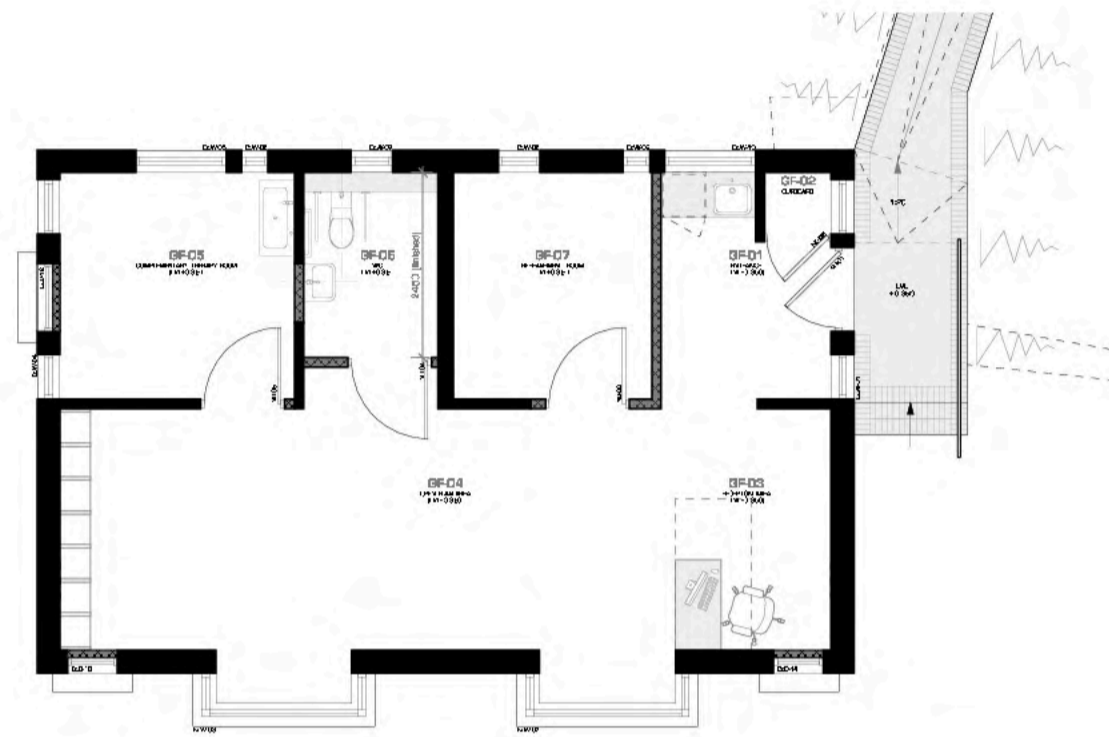
Existing ground floor plan



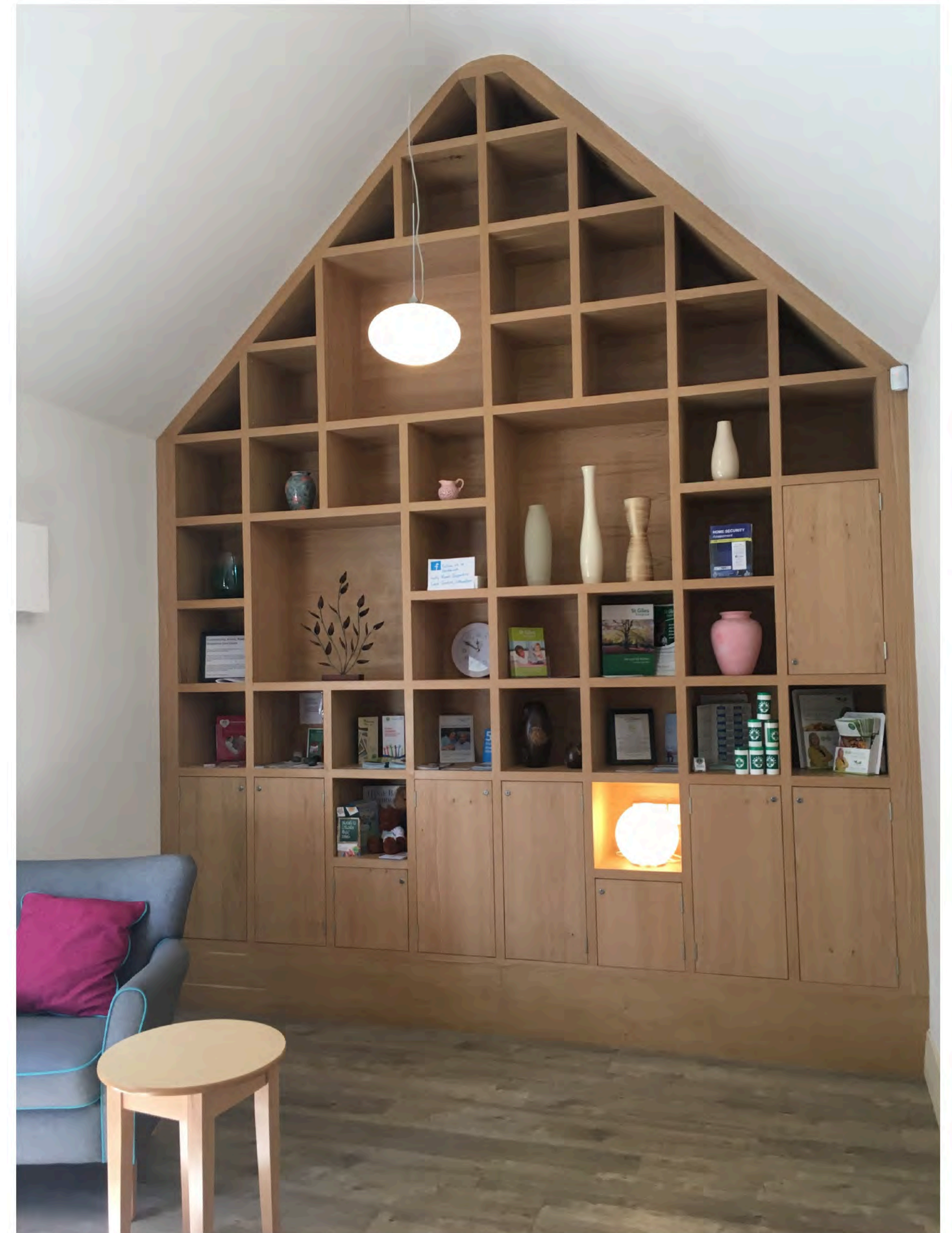
South elevation



East elevation



Proposed ground floor plan



Oak wall cabinet acts as the main feature of room



Transformation of existing flat into community room



Photomontage of existing flat



# Uttoxeter Hermitage Palliative Care Hub

Staffordshire

## Project Information

Name of project: Uttoxeter Hermitage Residential Home Palliative Care Hub  
 Date of occupation: September 2015  
 Construction cost: £96,050  
 Gross internal area: 66m<sup>2</sup>  
 Procurement: Traditional

## Introduction

The Hermitage Charity Care Trust runs the Hermitage Residential Home that provides residential accommodation to ladies over the age of 65 and can also offer support to those with mild to moderate dementia. Sitting on a site just over 5,000m<sup>2</sup> the facilities include: a two storey Victorian house which provides the main access and administration, a recent single storey extension to this building providing residential accommodation and four semi-detached cottages that provide additional residential accommodation.

## Brief

The brief was to ascertain permission for Change of Use of one of the cottages, which had not been occupied for more than 7 years. The Hermitage Charitable Trust could then, in conjunction with St Giles Hospice and Katherine House Hospice, refurbish the cottage internally, and open a palliative care hub that would look after not only the local residents, but also provide service to the East Staffordshire population.

## Description

The external appearance of the cottage was not altered or modified, though the refurbishment involved repairing the roof, flashings, pebble dash render and painting windows and doors. The cottage was then refurbished internally, with layout adjustments, to accommodate the following new facilities: open plan community room with kitchenette, bereavement room, therapy room and accessible WC. New insulation was added above the ceiling, the current windows were restored, and internal double glazing was introduced, to improve the fabric U values. New heating, lighting and electrics were fitted to make the cottage more energy efficient. The garden levels were adjusted to provide level access to benefit all patients.

The project was completed on time and on budget. The new counselling rooms, accessible WC and kitchen are clean, modern, light and relaxing. Knocking through to join the living spaces of the two flats has provided a flexible palliative care hub. The bespoke joinery feature at the end of the space act as a feature, providing plenty of storage without compromising the space in the room.