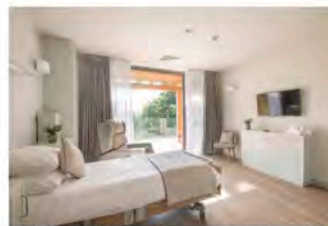


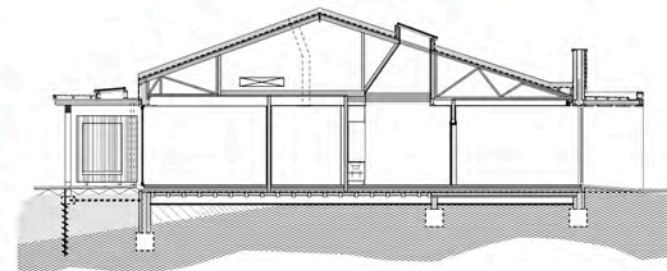
Family Day Room



Bedroom Terrace



Patients Bedroom



External View of the Multi Faith Room



## St David's Hospice In-patient Unit Newport

**Project Information**  
 Name of project: St David's Hospice Care, In Patient Unit  
 Date of occupation: June 2017  
 Construction cost: £4.4M  
 Gross internal area: 1660m<sup>2</sup>  
 Procurement: Traditional

**Introduction**  
 St David's Hospice Care with its headquarters at the day hospice / outreach chemotherapy unit based in Newport, Gwent, provides palliative care for people facing a progressive life-limiting illness which is no longer curable. In 2013 St David's Hospice Care took over St Anne's Hospice based at St Joseph's Hospital (also based in Malpas, Newport) merging community and in patient care together to provide significant benefits for patients and families.

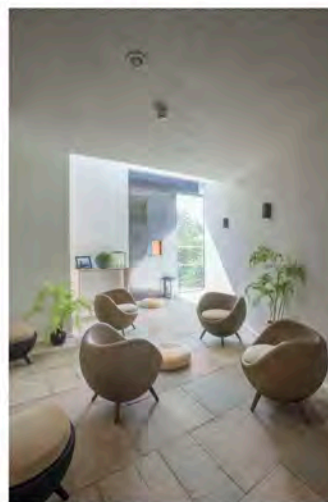
**Brief**  
 St David's Hospice care had a 5 year lease on the site at St Joseph's Hospital; however it was clear that firstly, the existing hospice was not fit for purpose and secondly, more hospice beds were required for the local population. The vision was to construct a new state of the art in-patient hospice linked to the current day hospice so kitchen facilities can be shared and patients can flow freely between both buildings.

**Description**  
 The new in-patient unit provides 15 en-suite bedrooms for palliative and respite care, each fitted with large bi-folding glazed doors opening out onto a private, covered terrace and providing access to the patients garden and newly planted wild flower meadow beyond. Each room also has the flexibility to be heated and cooled by in built fan-coil units so the environment of the patient can be adjusted to the individual patient needs. The support include assisted bathrooms, sluice rooms, drugs room, clinical offices, multi faith room, a family day room for those patients well enough to leave their bed and a social hub and cafe area which includes an interactive magnetic wall for visiting children.

We adopted a fabric first approach with the implementation of high levels of thermal insulation and natural day light, and a low level of air tightness. The building also incorporates photovoltaic panels, heat recovery devices in the ventilation system and lighting sensors, all of which results in a highly energy efficient building. Externally the new building incorporates the same cedar shingle and metal cladding systems as the existing day hospice to provide a level of consistency, with the addition of copper cladding and sandstone walling to create focal points for the entrances into the building.



Main Entrance & Social Hub



Multi Faith Room