

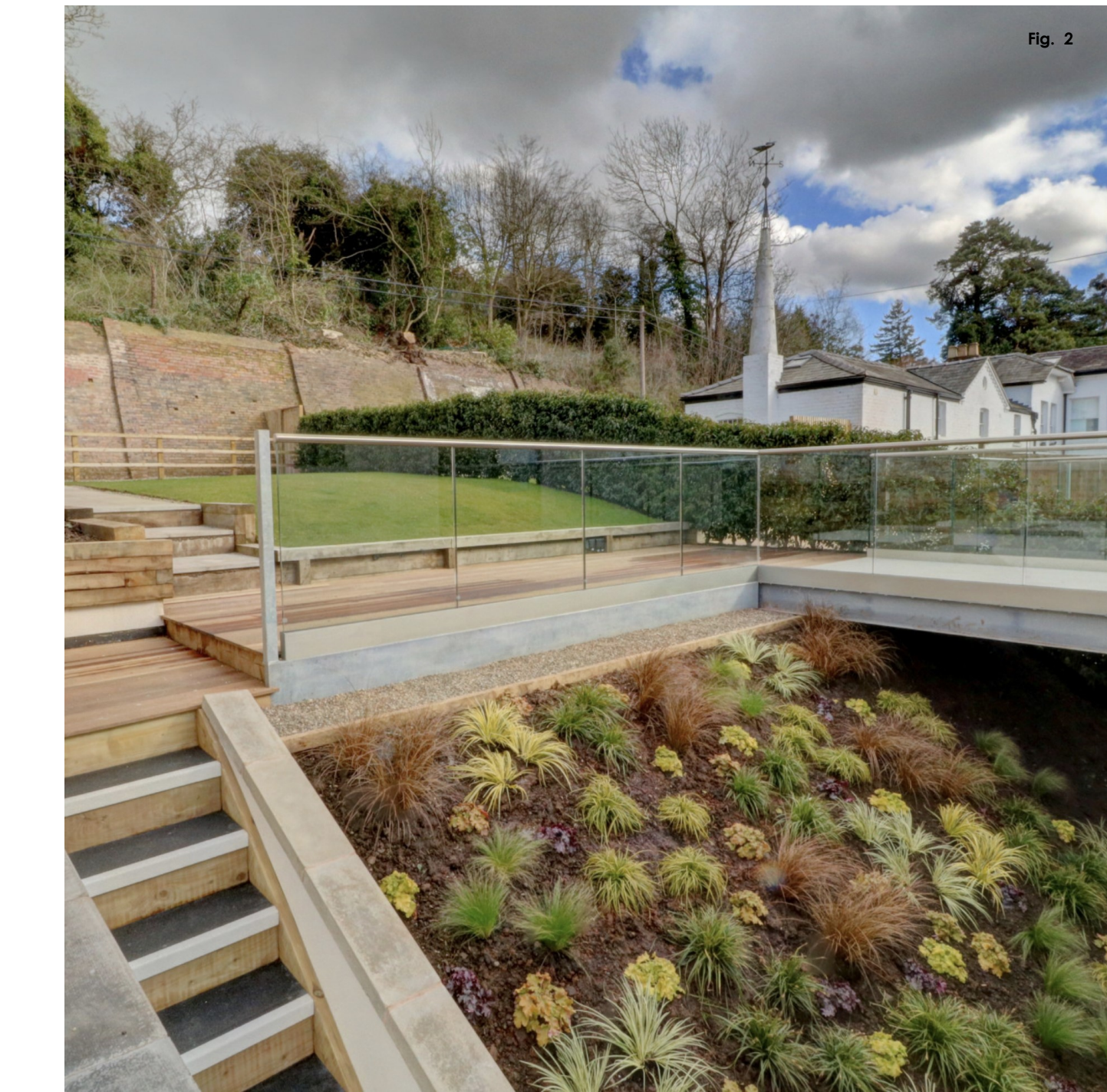
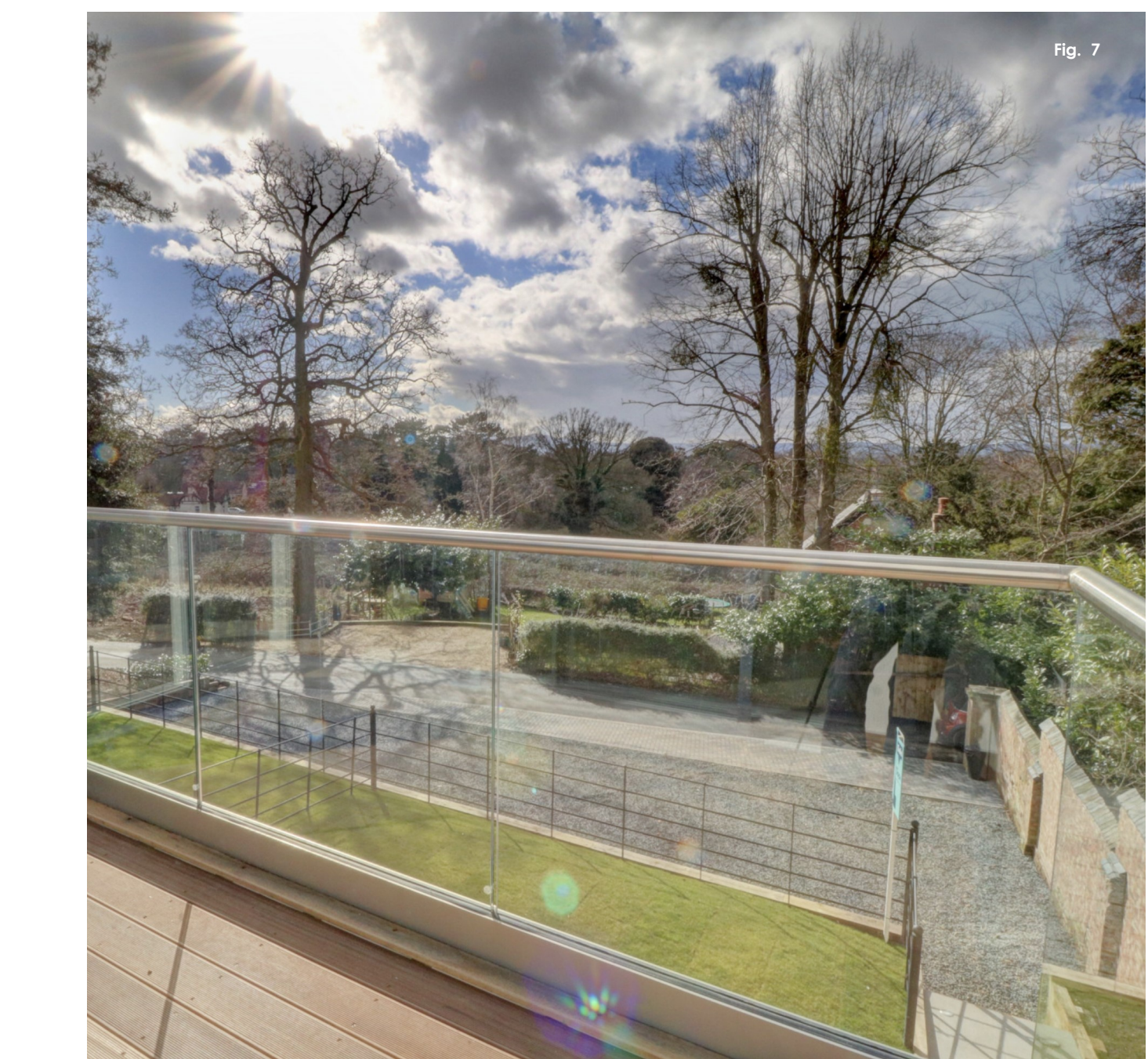


category: **Built Project in Worcestershire.**
 name: **Development at Heron Lodge, Worcester.**
 completed: **October 2019**

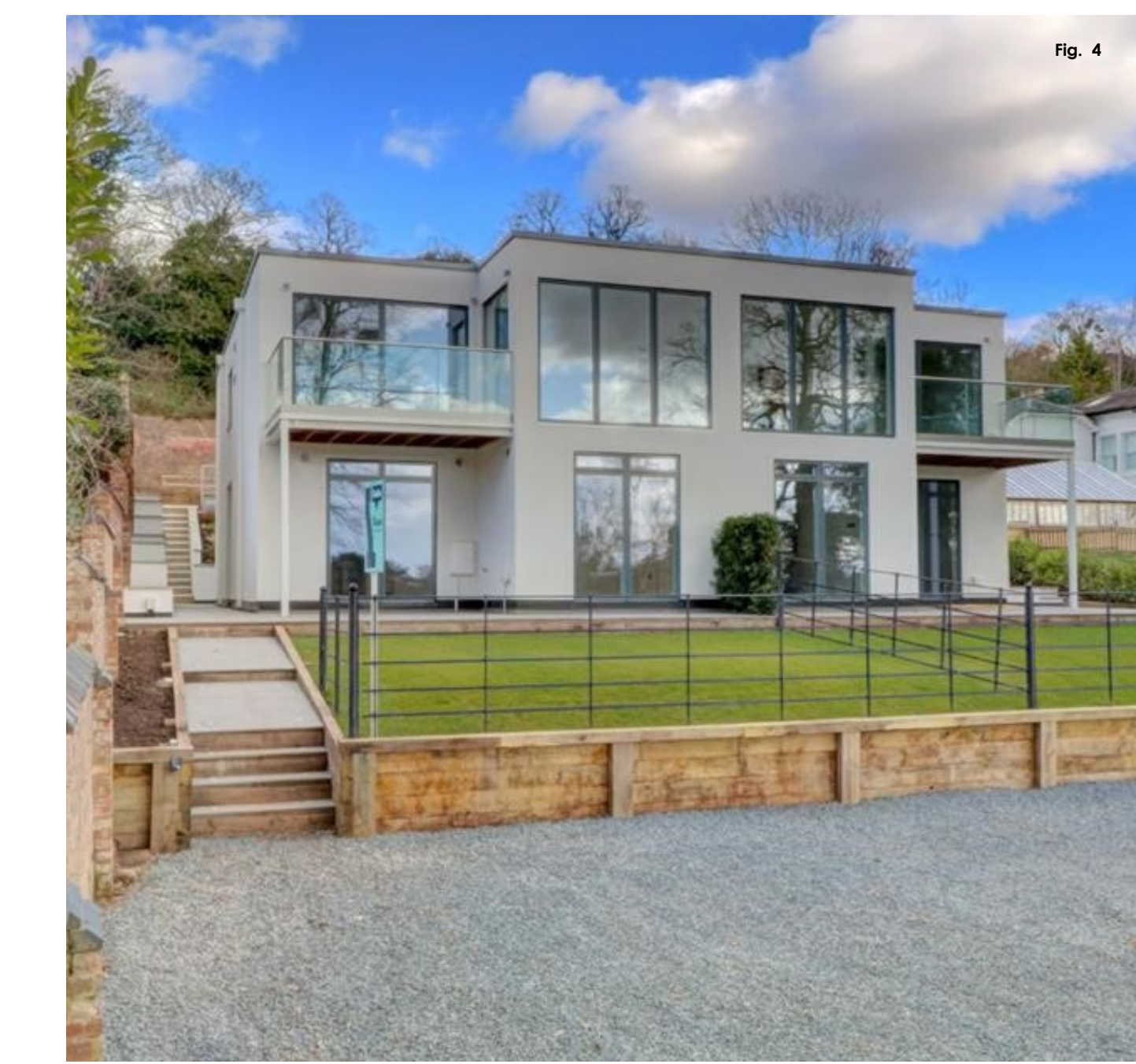
The project comprises of two contemporary semi-detached dwellings set within the curtilage of Heron Lodge - a Grade II listed building accessed from the London Road in the Redhill area of Worcester. Heron Lodge was originally the largest of a group of Georgian villas accessed from nearby Lark Hill Road and the existing listed terrace terminates just short of the site, to its north-east corner.

An existing approval was deemed impractical to develop and L+SA were commissioned to undertake a major redesign without unlocking the principals established in the approved scheme. The revised proposals, which involved moving the houses forward on the site and changing the configuration and layout of the individual houses, resulted in a more sympathetic design, respecting the setting and context of the site and reflecting the scale and materiality of neighbouring properties.

The design specifically responds to the steeply sloping site and features living areas at first floor level which open onto external terraces, making the most of both the secluded setting and the expansive views over the city towards the Malvern Hills in the west. Open plan kitchen spaces also located on the upper floor, access private rear gardens via a glazed bridge, linking the first floor living spaces to the historic walled gardens to the east.



Key:
 Fig. 1 - View from west.
 Fig. 2 - View of rear garden + bridge
 Fig. 3 - View over bridge to rear garden
 Fig. 4 - View from north-west.
 Fig. 5 - Location plan.
 Fig. 6 - External terrace in treeline
 Fig. 7 - View from external terrace to west.
 Fig. 8 - Design stage site plan.



L + SA
 Lett + Sweetland Architects
 58 London Road
 Worcester, UK
 WR5 2DS
 t: +44(0)1905 353 768
 www.lettsweetland.co.uk
 e: architects@lettsweetland.co.uk