



Fig. 1

category: **Built Project in Worcestershire**  
 Name: **Sir Thomas White Court, Worcester.**  
 completed: **October 2018**

Sir Thomas White Court comprises of the conversion of an existing two storey office building and the erection of a new two storey block to form 10 single bed apartments for adults at risk of homelessness in Worcester. Developed by Worcester Municipal Charities CIO and constructed over a 12month period by D&S Contractors Limited, the project received the award for **Excellence & Inspiration for an outstanding Almshouse project** at the 2019 Almshouse Association Awards.

The project is situated in an existing residential area in the centre of Worcester and mediates between the three storey Georgian style townhouses to the north and east of the site and the lower, former industrial buildings, to the south and west. The use of brickwork, masonry and timber panelling reduces the overall mass of the new block, whilst the simply expressed gables echo the scale and form of the existing streetscape.

Projecting bay windows to the north and east are splayed to direct views away from the properties opposite, maintaining the amenity and privacy of the buildings neighbours and a secure private courtyard between the two blocks provides the residents with an area for clothes drying, cycle storage and socialising.

Fig. 2

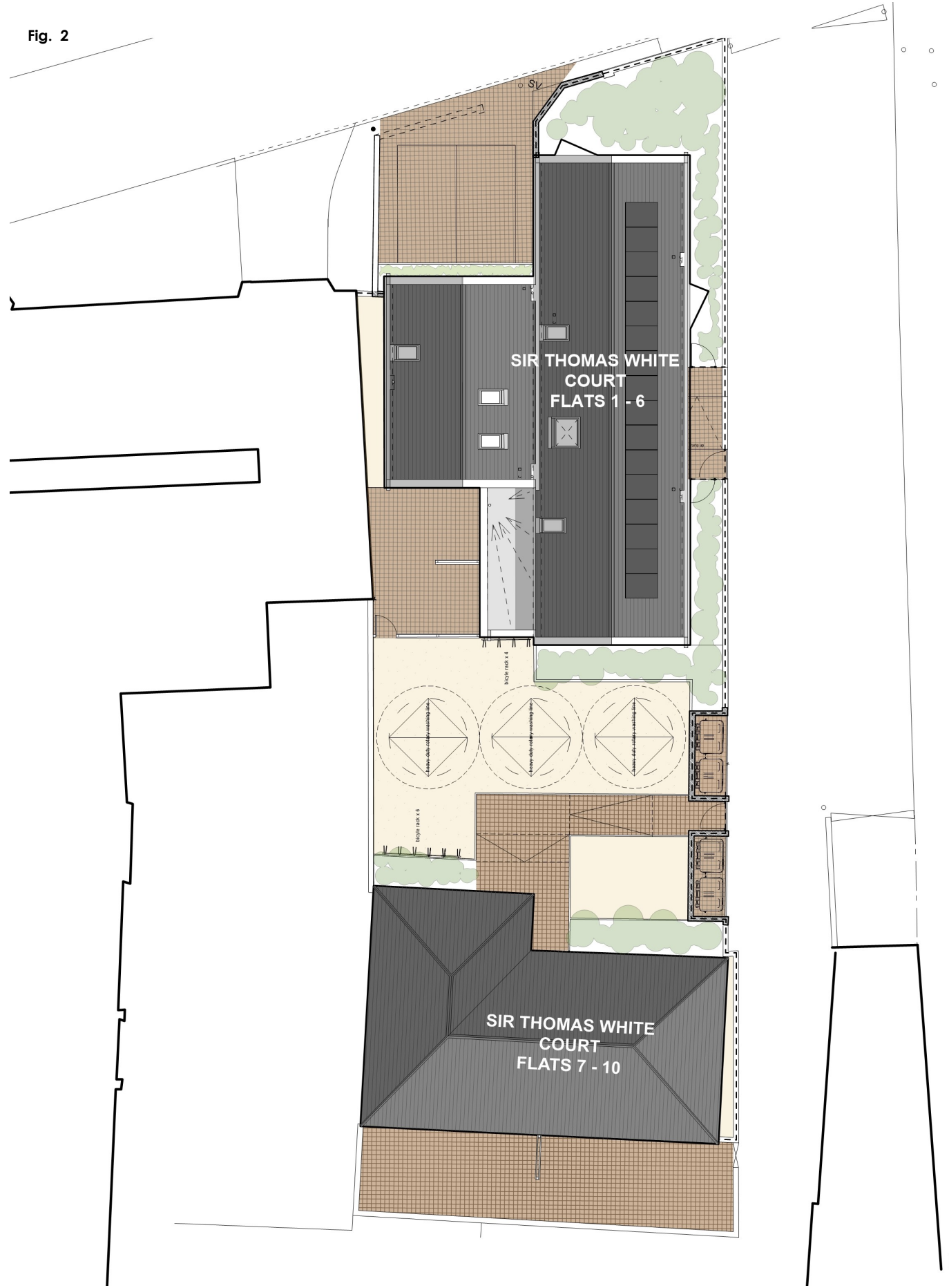


Fig. 3



Fig. 4



Fig. 5



purpose made powder coated aluminium roof / capping

acoustic layer below capping / roof

nom 50mm rigid tapered insulation with 40mm rigid insulation to face of SHS

12.5mm WBP plywood deck

90 x 6 mm continuous galvanised steel plate continues past opening nom. 450mm

nom 80mm rigid insulation between structure

SHS and ms plate drilled for fixings at max 400 cns

50 x 70 galvanised ms SHS with 6 x 125mm galvanised ms plate

50 x 70 galvanised ms SHS top rail

breathable vapour barrier below insulation

12.5mm insulated plasterboard with 25mm rigid insulation - XtraTherm Thin R XT/TR or equal

50 x 50 galvanised ms SHS corner post

50 x 70 galvanised ms SHS with 6 x 90mm galvanised ms plate

50 x 70 galvanised ms SHS with 6 x 110mm galvanised ms plate

100 x 6 mm continuous galvanised steel plate to inner face of wall - continues past opening nom. 450mm

50 x 70 galvanised ms SHS bottom rail

nom 70mm rigid insulation between structure

12.5mm WBP plywood soffit

nom 35mm rigid insulation to u/s with 70mm rigid insulation to face of SHS

purpose made powder coated aluminium soffit / capping

Fig. 6

#### Key:

- Fig. 1 - View from entrance looking north towards main block.
- Fig. 2 - Site plan.
- Fig. 3 - Detail at entrance to main block.
- Fig. 4 - View from courtyard to north east
- Fig. 5 - Design proposals - street view.
- Fig. 6 - Exploded isometric showing projecting window construction



Lett + Sweetland Architects

58 London Road  
 Worcester, UK  
 WR5 2DS

t: +44(0)1905 353 768

www.lettsweetland.co.uk  
 e: architects@lettsweetland.co.uk